

PARTNERSHIP IN HOUSING PROJECT

We will assist you in applying for rental and supported accommodation through this service. We will support young people and families in accessing and maintaining accommodation.

We will assist in:

- Budgeting
- References
- Presentation
- ID
- Advocacy
- Crisis & supported long term accommodation

Take advantage of this offer of FREE

advice and support

Phone:.....9752 2855 **Mobile:**.....0419 049 916
Fax:.....9754 4922 **Email:**.....pjh@aswa.org.au

ASWA RE-ENTRY COORDINATION SERVICE & ACCOMMODATION PROGRAM

We offer a coordinated service for people exiting prison who are relocating to the South West.

Support and assistance provided:

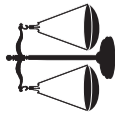
- Accommodation
- Transport
- Financial Assistance
- Centrelink Payments
- Identification
- Referral for Employment
- Counselling and Support for families

PHONE (08) 9791 3213
Email: reentry@aswa.org.au
40 Charles Street, Bunbury

ED START

ASWA's Ed Start program offers support to indigenous young people who are disconnected from school and provides an opportunity to complete their schooling and studies on line. An Indigenous Mentor is available 25 hour per week to provide support with learning which is available at Rosalie Cottage through our on line computers.

Rosalie Cottage
67 Kent St Busselton
Phone: (08) 9752 2855
Freecall: 1800 608 085
Email: edstart@aswa.org.au



TENANT ADVOCACY SOUTH WEST

Free Tenancy Information and Advice:

Are you renting or thinking of renting?
 Having problems with your landlord?
 Need advice before you sign your lease agreement?

OFFICE:

40 Charles Street
Bunbury WA 6230
Freecall: 1800 222 213
Phone: 9791 1877
Fax: 9791 3287

Email: tasw@aswa.org.au
Available at Busselton and Margaret River Offices by appointment only.

Provide information and advice about:

- Understanding your lease agreement
- Breach notices and what they mean
- Letter writing and negotiation
- Your rights and responsibilities

Indigenous Tenancy Service

AWAS' Indigenous Tenancy Service offers specific advice and support to Indigenous tenants and their families who may be experiencing difficulty in maintaining their tenancies both in public housing and the private rental market. Our indigenous Tenant advocate can assist you to negotiate with your landlord, provide you with information and support, provide case work should you require extra assistance and support to resolve the dispute and finally community education relating to rights and responsibilities of tenants.

ASWA Office

40 Charles St Bunbury
Phone: (08) 9791 3213 Freecall: 1800 115 799
Fax: (08) 9791 3287
Email: tas2@aswa.org.au

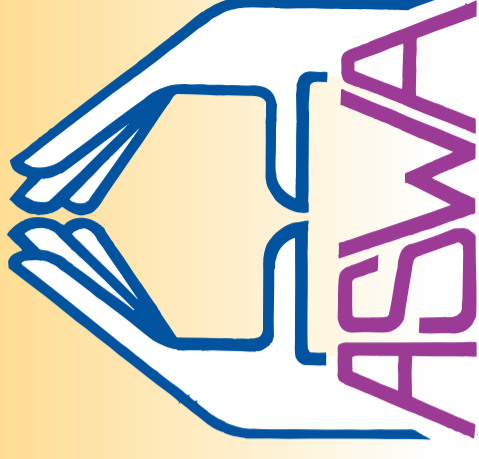
A.S.W.A. acknowledges the support of the following organisations:

Department for Community Development
 Department of Family, Community Services and Indigenous affairs
 Department of Health and Ageing
 Department of Corrections
 Department of Housing and Works
 Lotterwest
 Department of Consumer and Employment Protection
 Microsoft
 Department of Employment and Workplace Relations

EMERGENCY RELIEF

Bunbury, Busselton, Margaret River
(When funds are available)

Phone in the morning for appointment
THURSDAY ONLY



Agencies for South West Accommodation Inc

ASWA VISION STATEMENT

ASWA aims to provide a range of professional services within the scope of the agency to people in the South. We work in partnership with you in a manner, which is people-focused, ethical, supportive and flexible. We believe in dignity, respect and equality.

BUNBURY

Address: 40 Charles Street, Bunbury WA 6230
Phone: (08) 9791 3213
Fax: (08) 9791 3287
Email: admin@aswa.org.au
ceo@aswa.org.au
finance@aswa.org.au

BUSSELTON

Address: 67 Kent Street, Busselton WA 6280
Phone: (08) 9752 2855
Fax: (08) 9754 4922
Email: bsn@aswa.org.au

MARGARET RIVER

Address: Margaret River Community Centre,
 Margaret River WA 6285
Phone: (08) 9757 3661
Email: jpet@aswa.org.au

MANJIMUP

Address: Cnr Moore & Rutherford St, Manjimup WA
Phone: (08) 9771 8893
Email: jpet2@aswa.org.au

WEBSITE: www.aswa.org.au

ASWA - RECONNECT SERVICE



Offices:
40 Charles Street, Bunbury
67 Kent Street, Busselton
Referrals: (08) 9791 3240
Email: swyfss@aswa.org.au

Who Can Access Our Service?

- Young people between the ages of 12-18 years and their families.
- Who are experiencing conflict at home
- Who have been asked to leave home
- Who have left home and wish to improve relationships with family
- Who are living independently from family networks and would like some support

Service areas include:

Bunbury, Busselton, Dunsborough,
Augusta-Margaret River, Harvey, Colliie,
Donnybrook and Nannup



Drug Information & Counselling Service

- Free friendly professional counselling and support for 12 - 25 year olds and their families
- Free information and community talks
- Joint case management and consultation

South West Region, Bunbury

Phone: (08) 9791 3213

Email: substance@aswa.org.au

Lower South West Region

Phone: (08) 9752 2855

Email: swyfss.r@aswa.org.au

ASWA-REACHPROGRAM PARENTS PLUS

Provides family-focussed education, support and counselling to parents of young children (0-12 years), who may be experiencing a difficult situation, or simply want advice.

This program offers:

- Parenting education / Skills development
- Counselling
- Mentor support
- Support and advice
- Relationship skills
- Advocacy and liaison with other services
- Information and referral
- Community education

PHONE: (08) 9791 3213

FAX: (08) 9791 3287

EMAIL: parents@aswa.org.au

OFFICE: 40 CHARLES STREET, BUNBURY

Bunbury Supported Accommodation Service

BSAS provides supported crisis accommodation for singles or families who are currently homeless in the Bunbury area.

Support is provided to assist you to move onto independent living and is designed on an individual basis to suit your needs. Support may be offered in a number of ways including:

- Information and referral to relevant Services
- Living Skills
- Budgeting Advice
- Advocacy and liaison with other services

Youth Accommodation

Crisis and transitional accommodation for young people 15 to 24

Adult Accommodation

Crisis and transitional accommodation for 18 years and over, singles and families.

24 HOURS

7 DAYS A WEEK

CONFIDENTIAL SERVICE

ASWA OFFICE

40 Charles St Bunbury

Phone: (08) 9791 3390

Freecall: 1800 001 590

Fax: (08) 9791 3287

Email: bas@aswa.org.au



What is JPET?

JPET helps disadvantaged young people get things together. It provides support, advice and referral assistance to young people who are homeless or at risk of becoming homeless.

JPET can link young people into employment and training, stay at school, or work out finances.

JPET Services are available in:

Bunbury, Busselton,

Margaret River, Augusta,

Dunsborough, Nannup,

Capel, Harvey,

Manjimup, and Colliie

get back on track

Bunbury Office:

40 Charles St, Bunbury
Phone: (08) 9791 3213
Fax: (08) 9791 3287
Email: jpet@aswa.org.au

Busselton Office:

67 Kent Street, Busselton
Phone: (08) 9752 2855
Fax: (08) 9754 4922
Email: jpet2@aswa.org.au

Manjimup Office:

Cnr Moore & Rutherford St
Manjimup, by appointment
Phone: (08) 9771 8893

Margaret River Office:

Margaret River Resource Centre
Phone: (08) 9757 3661
Email: jpet@aswa.org.au

Men's Family Relationship Services Program

A free service that provides men with a safe place to discuss relationship issues, either individually or in a group setting.

Flexibility is provided around hours and setting, to enable access for men from a range of backgrounds and circumstances.

PHONE: 9791 3213

40 Charles Street, Bunbury

Email: mfr@aswa.org.au

CAPES ACCOMMODATION SUPPORT & ADVOCACY

Offers day to day support for young people, families and individuals who are having difficulty maintaining their tenancies. Our support worker can assist by working with landlords, property managers and Homewest and tenants.

Support to tenants include:

- Home visiting
- Tenant education
- Maintaining the tenancy
- Negotiations with rent arrears and other debts
- Transport to keep appointments
- Assistance with preparation for rental inspections and hands on assistance
- Mentoring and practical support (eg maintenance, budgeting, cooking, tenancy rights and obligations)
- Support to move premises where appropriate.

Only available in the Capes Region

67 Kent St Busselton

Phone: (08) 9752 2855

Freecall: 1800 608 085

Email: casa@aswa.org.au